

SIXTH
FORM

2025



PROSPECTUS
AND COURSE GUIDE

Contents

Introducing The Furze Platt Sixth Form	3
Welcome	4
Outstanding Facilities	5
Application Process	9
How to Apply	9
Conditional Offers	9
Key Dates	10
Curriculum & Teaching	11
Entry Requirements	11
A Rough Guide to Sensible Subject Combinations	12
Subject Overviews	15
Art and Design (A-Level)	16
Biology (A-Level)	17
Business (A-Level)	18
Business (BTEC Level 3 National Extended Certificate)	19
Chemistry (A-Level)	20
Computer Science (A-Level)	21
Criminology (WJEC Level 3 Diploma)	22
Digital Media (Level 3 Cambridge Technical Extended Certificate)	23
Drama (A-Level)	24
Economics (A-Level)	25
English Literature (A-Level)	26
Extended Project Qualification (Level 3 free standing qualification)	27
Fashion and Textiles (A-Level)	28
French (A-Level)	29
Further Maths (AS and A-Level)	30
Geography (A-Level)	31
German (A-Level)	32
History (A-Level)	33
Medical Science AAQ (BTEC Level 3 National Extended Certificate)	34
Mathematics (AS/A-Level)	35
Music (A-Level)	36
Physics (A-Level)	37
Physical Education (A-Level)	38
Politics (A-Level)	39
Product Design (A-Level)	40
Psychology (A-Level)	41
Religious Studies (A-Level)	42
Spanish (A-Level)	43
Sport (BTEC - Level 3 Extended Certificate)	44
Contacts & further information	46
The Sixth Form Team	46



Introducing The Furze Platt Sixth Form: A Foundation for Excellence

Furze Platt Senior School's Sixth Form is one of the most popular and successful in the Windsor and Maidenhead area. Our focus, passion and commitment, combined with excellent teaching and a positive learning culture, mean our young people emerge highly qualified and well-rounded, ready to thrive at university or to excel in their chosen career or apprenticeship.

The success of the Furze Platt Sixth Form is built on four key foundations:

- 1) A first-class curriculum combined with outstanding teaching
- 2) A dedicated focus on students as individuals, giving high-quality academic, pastoral, university and career support
- 3) A wide range of extra-curricular and leadership opportunities
- 4) Outstanding facilities throughout the school including great spaces to independently learn and study



[Return to Contents](#)

Welcome

A very warm welcome to Furze Platt Senior School's Sixth Form. I hope this prospectus gives students, parents and carers insight into our wonderful Sixth Form here at Furze Platt.

It is our aim to provide students with a stimulating and supportive environment that not only maximises academic achievement but also gives all young people who study here a genuinely rewarding and fulfilling experience. One of the defining characteristics of our Sixth Form is the inclusive and welcoming atmosphere that means our students, including the many who choose us from other schools, find it easy to settle into life here at Furze Platt.

We are committed to being a fully comprehensive Sixth Form that offers a broad and varied curriculum specifically tailored to the requirements of our students. Our curriculum is made up of over 25 subjects, all expertly taught by subject specialists, ensuring Furze Platt students receive excellent tuition throughout their time in Sixth Form. Class sizes are smaller than students have been used to so far and teaching staff regularly monitor academic progress, with clear advice and guidance being given to ensure students maximise their potential.

Sixth Formers are given excellent opportunities to develop powerful independent learning skills, and our approach allows students to balance the independence and responsibility needed for them to be successful, regardless of their personal aspirations beyond the Sixth Form.

It is our ambition to equip students with the tools to achieve their aspirations, whether this is to progress to Higher Education, pursue an apprenticeship or embark on a career in employment. Whatever their aims, our dedication to working with students as individuals means Furze Platt Sixth Formers receive personalised, tailored guidance

throughout their post-16 journey. Students are given high-quality, individualised advice in the form of their personal tutor who is fundamental in ensuring their overall success and remains with students throughout their time in Sixth Form. Whether by ensuring a smooth transition from Year 11 to the Sixth Form in managing the shift towards a more independent style of working, or in making use of the extensive university and careers advice available, Furze Platt's pastoral system provides an environment in which Sixth Formers feel supported and empowered to reach their full potential.

We regard Sixth Form as the best part of a student's time in school and we aim to give all Furze Platt Sixth Formers the opportunity to enjoy this exciting and dynamic time in their education beyond the classroom as well as within it. The vibrant nature of Furze Platt Senior School means that in addition to academic opportunities, we also offer a range of other exciting and enriching interests including sports, music, the arts, drama, tours, trips and visits or societies and clubs organised by many Sixth Formers themselves.

I hope that our Sixth Form Prospectus and Course Guide allows you to discover more about what makes our Sixth Form so individual, stimulating and rewarding. I also hope that the next few pages help illustrate what life in these exciting two years is like, the courses that we offer and more about the advice and support that will enable you to achieve your highest ambitions whatever those next steps may be.

If you have any further questions, then please feel free to speak to me or any of the Sixth Form team.



A handwritten signature in black ink that reads "P. M. Ging". The signature is fluid and cursive.

Mr P Ging
Head of Sixth Form

[Return to Contents](#)

Outstanding Facilities

In addition to specialist teaching rooms, Sixth Form students benefit from a dedicated Sixth Form area, housing the common room, teaching rooms and study rooms. There is a plentiful supply of desktop computers, and we have a secure storage and charging unit for students who wish to bring their own laptops and tablets to school. The school boasts a fully equipped Theatre with gymnasium style seating – perfect for visiting speakers who regularly talk to Sixth Form students - a 3-storey Science and English block, multi-purpose, professional drama and dance studios, our own recording studio, and a highly-equipped Maths block. The school benefits from enviable sporting facilities, including floodlit tennis/netball/basketball courts, a 60-station gym and a professional, floodlit all-weather pitch.

[Return to Contents](#)



'TEACHERS' SUBJECT KNOWLEDGE IS PARTICULARLY STRONG AND BEHAVIOUR IN THE SIXTH FORM IS EXEMPLARY.'

-OFSTED 2021

Extra-Curricular & Leadership Opportunities

Furze Platt Sixth Form students are active and involved both across the school and the wider community. Students undertake a range of leadership roles including a variety of specific ambassador roles, through the House system as House Captains and as Year Captains, and as the Head Students and Deputy Head Students of the school overall. Sixth Formers organise and run a multitude of peer mentoring schemes as well as coordinating Student Voice through the running of the School Council. Sixth Form students also organise a significant number of clubs/societies and fundraising events, as well as participating in the Duke of Edinburgh Award Scheme, National Citizenship Service programmes and Eton College Summer School. Wednesday afternoons are dedicated to personal development and extra-curricular activities, with students choosing from a programme that includes all manner of sporting activities, as well as practical and cultural activities. Students' understanding of moral and ethical issues is enhanced through the tutor programme, which focuses on areas of current affairs and personal and cultural development.

[Return to Contents](#)



'SIXTH-FORM STUDENTS STUDY HARD, ACHIEVE WELL AND ARE GOOD ROLE MODELS FOR THE REST OF THE SCHOOL.'

Academic & Pastoral Support

Sixth Form students are extremely well nurtured and cared for at Furze Platt. Each student is placed in a friendly Sixth Form tutor group where their academic and personal development is overseen and supported. Students have opportunity to access the Learning Mentor and Coach, two members of support staff who provide guidance, resources and advice in developing students' study skills and approaches.

Students also have a comprehensive programme of advice and guidance for university entry, apprenticeships and career progression. The school boasts a Careers and Higher Education Fair, a Careers Week for Sixth Formers, our Work Experience programme and individual interviews with our Careers Advisor. Support with students' university application process is thorough and provided by Form Tutors, the Heads of Progress for Year 12 and 13, and the Head of Sixth Form. Students are given access to a range of platforms that they use to structure and plan their higher education and career aspirations, meaning our young people are regularly reviewing their progress in their studies based on clear goals.

[Return to Contents](#)

Progression from Furze Platt Sixth Form

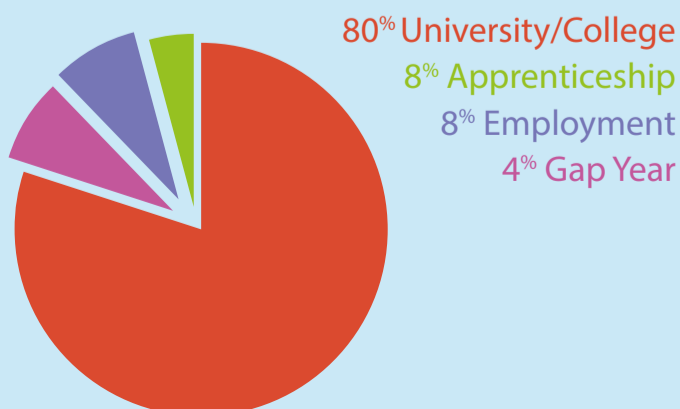
Furze Platt Sixth Formers gain excellent qualifications that act as the gateway to Higher Education and career success. 80% of students progressed to university last year including Oxbridge and many Russell Group universities. Equal support is given to those choosing to begin their career straight from school, with a significant number taking up apprenticeships in highly sought-after fields. Some students go on to follow specialist routes in areas such as elite sport or international study at universities in America or Europe.

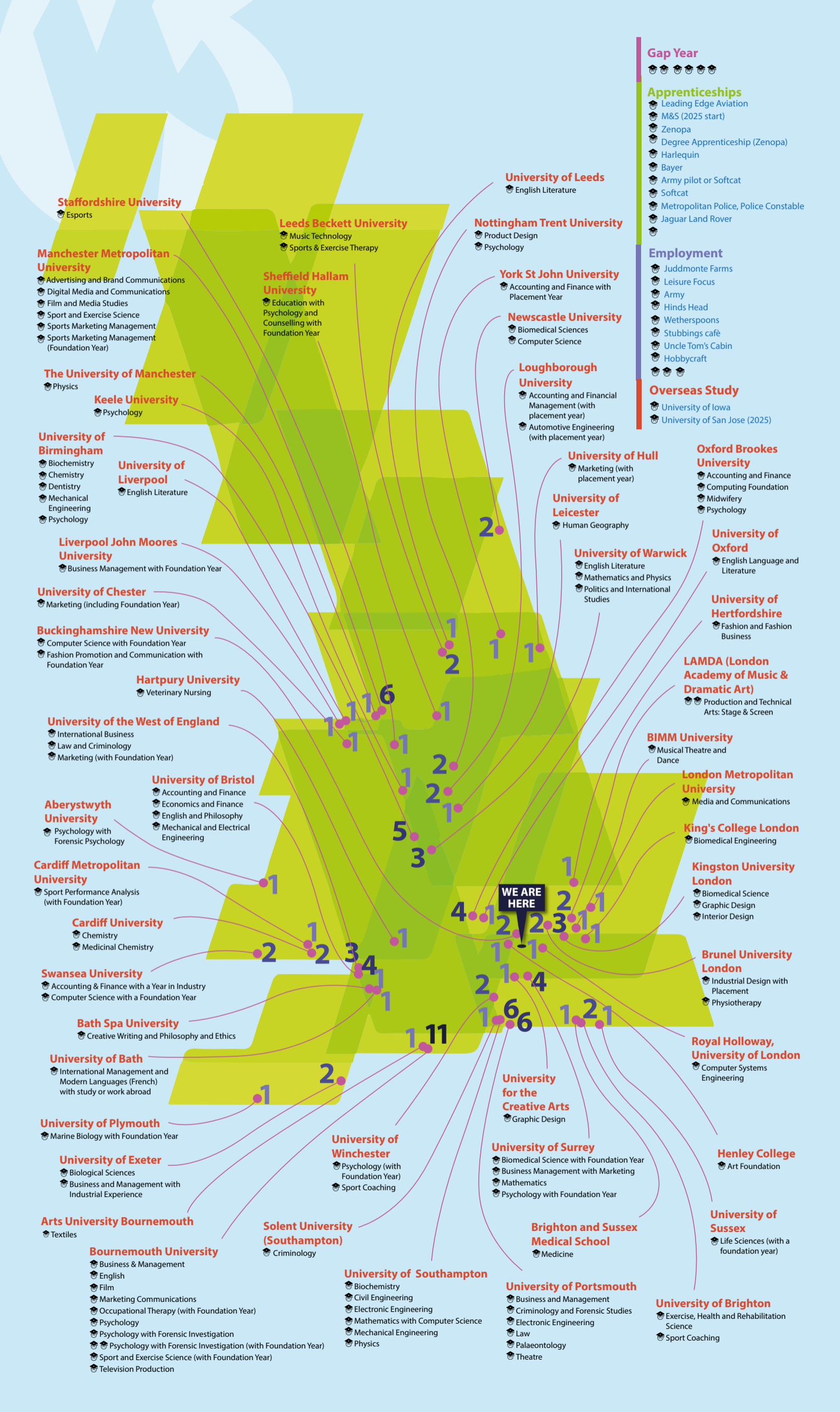


49 Different Universities

89 Different Courses

134 Students





Staffordshire University

- Esports

Manchester Metropolitan University

- Advertising and Brand Communications
- Digital Media and Communications
- Film and Media Studies
- Sport and Exercise Science
- Sports Marketing Management
- Sports Marketing Management (Foundation Year)

The University of Manchester

- Physics

Keele University

- Psychology

University of Birmingham

- Biochemistry
- Chemistry
- Dentistry
- Mechanical Engineering
- Psychology

University of Liverpool

- English Literature

Liverpool John Moores University

- Business Management with Foundation Year

University of Chester

- Marketing (including Foundation Year)

Buckinghamshire New University

- Computer Science with Foundation Year
- Fashion Promotion and Communication with Foundation Year

Hartpury University

- Veterinary Nursing

University of the West of England

- International Business
- Law and Criminology
- Marketing (with Foundation Year)

University of Bristol

- Accounting and Finance
- Economics and Finance
- English and Philosophy
- Mechanical and Electrical Engineering

Aberystwyth University

- Psychology with Forensic Psychology

Cardiff Metropolitan University

- Sport Performance Analysis (with Foundation Year)

Cardiff University

- Chemistry
- Medicinal Chemistry

Swansea University

- Accounting & Finance with a Year in Industry
- Computer Science with a Foundation Year

Bath Spa University

- Creative Writing and Philosophy and Ethics

University of Bath

- International Management and Modern Languages (French) with study or work abroad

University of Plymouth

- Marine Biology with Foundation Year

University of Exeter

- Biological Sciences
- Business and Management with Industrial Experience

Arts University Bournemouth

- Textiles

Bournemouth University

- Business & Management
- English
- Film
- Marketing Communications
- Occupational Therapy (with Foundation Year)
- Psychology
- Psychology with Forensic Investigation
- Psychology with Forensic Investigation (with Foundation Year)
- Sport and Exercise Science (with Foundation Year)
- Television Production

Solent University (Southampton)

- Criminology

University of Winchester

- Psychology (with Foundation Year)
- Sport Coaching

University of Southampton

- Biochemistry
- Civil Engineering
- Electronic Engineering
- Mathematics with Computer Science
- Mechanical Engineering
- Physics

University of Leeds

- English Literature

Nottingham Trent University

- Product Design
- Psychology

York St John University

- Accounting and Finance with Placement Year

Newcastle University

- Biomedical Sciences
- Computer Science

Loughborough University

- Accounting and Financial Management (with placement year)
- Automotive Engineering (with placement year)

University of Hull

- Marketing (with placement year)

University of Leicester

- Human Geography

University of Warwick

- English Literature
- Mathematics and Physics
- Politics and International Studies

Oxford Brookes University

- Accounting and Finance
- Computing Foundation
- Midwifery
- Psychology

University of Oxford

- English Language and Literature

University of Hertfordshire

- Fashion and Fashion Business

LAMDA (London Academy of Music & Dramatic Art)

- Production and Technical Arts: Stage & Screen

BIMM University

- Musical Theatre and Dance

London Metropolitan University

- Media and Communications

King's College London

- Biomedical Engineering

Kingston University London

- Biomedical Science
- Graphic Design
- Interior Design

Brunel University London

- Industrial Design with Placement
- Physiotherapy

Royal Holloway, University of London

- Computer Systems Engineering

Henley College

- Art Foundation

University of Sussex

- Life Sciences (with a foundation year)

University for the Creative Arts

- Graphic Design

University of Surrey

- Biomedical Science with Foundation Year
- Business Management with Marketing
- Mathematics
- Psychology with Foundation Year

Brighton and Sussex Medical School

- Medicine

University of Portsmouth

- Business and Management
- Criminology and Forensic Studies
- Electronic Engineering
- Law
- Palaeontology
- Theatre

Gap Year

- Graduation caps icon

Apprenticeships

- Leading Edge Aviation
- M&S (2025 start)
- Zenopa
- Degree Apprenticeship (Zenopa)
- Harlequin
- Bayer
- Army pilot or Softcat
- Softcat
- Metropolitan Police, Police Constable
- Jaguar Land Rover

Employment

- Juddmonte Farms
- Leisure Focus
- Army
- Hinds Head
- Wetherspoons
- Stubbings café
- Uncle Tom's Cabin
- Hobbycraft

Overseas Study

- University of Iowa
- University of San Jose (2025)

WE ARE HERE

Application Process

How to Apply

Applications are very straightforward. We use the online platform, Admissions+ for Applications to Furze Platt Senior School Sixth Form. The link can be accessed via the school website on the Sixth Form page under Sixth Form Applications and the process is slightly different for internal and external students.

All existing Furze Platt students will be set up on the system and sent a welcome email to their Furze Platt address.

External students will need to register directly in Admissions+ for applications to Furze Platt Senior School Sixth Form to set up their account.

Applications can be started immediately after our Open Evening on Thursday 21st November 2024. Once we have received fully completed applications, students will receive an automated confirmation email, and we will then continue to communicate with students via their primary email address (school email address for Furze Platt students) and on occasion directly to parents and carers.

Students will need to choose three main and two reserve subject choices. For students wishing to take four A-Level qualifications, four main choices should be selected.

Students will need to complete a transition statement, which will provide an opportunity for students to tell us more about their aspirations. Guidance can be found on our website under Transition Statement Guidelines.

Applications can be saved and then returned to as long as they are submitted before the application deadline. After the closing date we will review all student applications to set the subject timetable for September 2025. We will send out conditional offers by email from March 10th 2025 which will need to be responded to within 2 weeks.

Conditional Offers

Conditional offers are based on predicted grades which we know may change over Year 11 and so we may be able to amend offer subjects prior to Taster Days. Final places in the Sixth Form will only be offered based on actual grades on GCSE results day. If an applicant's GCSE grades mean that they do not meet the entry requirements for a subject they have chosen we will try to offer them an alternative. However, it may mean that we are unable to accept them into the Sixth Form.

[Return to Contents](#)

Key Dates

Sixth Form Open Evening
Thursday 21st November 2024

Application Deadline
Wednesday 8th January 2025

Conditional Offers Sent
From Monday 10th March 2025

Two Sixth Form Taster Days
Thursday 26th June & Friday 27th June 2025

GCSE Results and Sixth Form Registration Day
Thursday 21st August 2025 (in person)

Year 12 Induction Day
Wednesday 3rd September 2025



[Return to Contents](#)

Curriculum & Teaching

Furze Platt offers an exceptional range of A-Level subjects and Level 3 alternative academic courses that are all equivalent to an A-Level. We recognise how essential it is to match a young person's needs to their curriculum and ambitions and so aim to offer the broadest range of courses we can for our young people.

Most students will pick three A-Level subjects, which will make up their academic curriculum. This is the 'traditional' A-Level route. Students are encouraged to pick subjects that they enjoy and have an interest in, but that they also have proficiency in as well. Doing what you love and what you are good at is great advice for subject selection in Sixth Form!

You will find a helpful 'suitable subject combinations' on pages 12, 13 and 14 that may be useful when considering which A-Levels to take if you have a specific career or university ambition in mind.

Some students may opt to study a blended curriculum of two A-Levels and one alternative academic qualification (AAQ). AAQs offer a fantastic opportunity to learn and develop specific skills in a particular area and often result in students progressing into relevant apprenticeship and employment areas. However, all of our AAQs are accepted by universities and are equivalent in points totals to one A-Level, so this subject combination offers young people a valuable level of flexibility in preparing them for life beyond Sixth Form.

In some cases, students may opt to take three A-Levels plus Maths or Further Maths at AS level, or the EPQ. A small number of students may opt to take four A-Levels if they wish. This combination is designed to offer students who are considering Oxford, Cambridge or a Russell Group university an additional level of academic challenge.

Suitable Subject Combinations

Entry Requirements

In order to be considered for the Sixth Form, students will need to meet the entry criteria for their chosen subjects.

Students who wish to take more than three subjects must have an average points score from their GCSE subjects of 7 or higher.

Students should check the entry criteria in our subject pages to make sure they understand what each course requires. Please bear in mind some subjects have entry requirements in English and/or Maths that are higher than a grade 4.

'TEACHERS' SUBJECT KNOWLEDGE IS PARTICULARLY STRONG AND BEHAVIOUR IN THE SIXTH FORM IS EXEMPLARY.'

-OFSTED 2021

[Return to Contents](#)

A Rough Guide to Sensible Subject Combinations

This rough guide is for general advice only and does not replace specific research and/or consultation with the universities for the courses in which you are interested. It is also essential that you choose subjects which you enjoy and which interest you.

University Course or Career	Suggested subject combination at A-Level	Notes
Accountancy	Maths, Business Studies or Economics with one other, but any combination is permitted.	Accountancy degree course provides exemption from 'foundation' accountancy exams, but is not necessary to enter the profession.
Administration, the Civil Service etc	Almost any combination but subjects include English, History, Economics, Geography, Government and Politics and a Foreign Language, or two languages for EU work and some diplomatic work, but Sciences for Scientific Branch careers.	Good class of degree needed to enter Diplomatic Service, which has a very competitive entry.
Agriculture, Agricultural Research, Land Surveyor	Biology, Chemistry and/or Physics, Geography.	
Architecture	Art usually recommended, though not always vital, but drawing experience and skills necessary. Maths very useful. English or Modern Languages and Physics all valuable. Also Design, History and Business Studies.	Must have GCSE Maths. Compilation of a portfolio is essential for entrance to most Architecture courses.
Banking, Finance, Insurance	Business Studies or Economics. Maths and a Language is very useful.	Finance and Banking degree courses available, but not mandatory for careers in this area.
Biochemistry, Zoology, Botany, Marine Biology, Micro-Biology, Biology	Chemistry, Maths and Biology desirable. Some courses emphasise Biology, some Chemistry. The most competitive demand strong mathematics.	Some of the most competitive courses welcome Mathematics at A-Level. For most Maths AS is sufficient but for Oxbridge A-Level is advantageous.
Business Studies	GCSE Maths is essential and A-Level Maths would be an advantage. Languages strongly recommended.	More and more universities are offering combined courses in Business Studies and Languages; in some cases a language at A-Level is a condition of entry.
Chartered Surveyor	Geography, Maths, Economics, Art and Design.	
Chemistry	Chemistry, Maths, Physics or Biology.	Oxbridge applicants should have Maths at A-Level.
Computer Science, Statistics, Numerical Analysis	Maths, Physics and a science / computer science as a third subject.	Good A-Level grades required for entry to popular degree course.

Design	Design Technology, plus Maths, Physics (engineering side) or Maths, Business Studies (commercial management side). Art if committed to a career in 'artistic' Design.	Drawing skills should be developed in the Sixth Form, especially if considering graphic/fashion/ interior design.
Economics	Maths, Economics or Business Studies, indeed any combination of Art or science subjects. It is not always essential to have A-Level Economics (many universities now offer introductory courses). Most demand A-Level Maths, or perhaps Maths AS-Level, others require evidence of a strong GCSE performance.	For Oxbridge and other leading Economics courses, Maths at A-Level is needed and for PPE course at Oxford Maths AS or A-Level can be advantageous.
Engineering	Physics and Maths essential for the vast majority of universities. Design is useful, so is Economics, Electronics, Business Studies and a Language.	Maths or Further Maths A-Level is expected for Oxbridge entry.
English, Drama, English and Drama	English and a Foreign or Classical Language or Classical Civilisation or History.	Single Honours English is always more competitive for entry to university than English combined with one or more other subjects. Drama or English and Drama can be very competitive.
Fine Art	Art, English or any combination.	Completion of Foundation Course needed as precondition of entry to degree course.
Geography (art emphasis)	Geography, History, Economics, Business Studies, English, Languages, Art, one Science.	Slightly higher entry standards for Geography BA than for Geography BSc degree courses.
Geography (science emphasis)	Geography, Maths or Physics, Biology or Chemistry.	A wide variety of careers available with a Geography degree.
Geology	Two sciences and/or Maths.	
History	History, Languages, English or Economics.	An A-Level Language is not essential to read History but is helpful, especially for Oxford. A wide variety of careers is available with a History degree.
History of Art	Art, History, English; a modern and/or classical language.	
Journalism	English and a Foreign language, but any combination of subjects will do.	There are degree courses in Journalism, but entry to them is very competitive and work experience is almost a precondition of admission.
Law	Any combination, though History, Maths, English, Government and Politics and/or Economics are useful. For Patent Law add a Science. (Art is not recognised as an entry qualification for Law School).	At Cambridge, Law (part 2) via Modern Languages or Classics (part 1) is popular. Law graduates need one-year postgraduate study; non-law graduates, two years.
Leisure Industry, Sports Studies, Sports Science	Business Studies or Economics and either Chemistry or Biology or both.	Competitive entry to university. Record of commitment and success in sport very important.
Management Studies, Management Science	Maths, Economics or Business Studies.	Courses at university may overlap greatly in content with Business Studies courses.
Materials Science, Metallurgy	Chemistry, Physics and Maths. Design is useful.	

Maths, Maths with Physics, Theoretical Physics	Maths, Physics and a third.	Maths at A-Level or Further Maths, especially for Oxbridge.
Media and Communication Studies	English, a modern language.	Successful entry into the very competitive job market of journalism and broadcasting cannot be guaranteed with this qualification. Work experience in this area absolutely essential.
Medicine, Veterinary Science, Dentistry	Chemistry and Biology. Some medical schools like a non-science subject at A-Level. A good level of Maths is also important.	The minimum standard entry for Medicine depends on the university but is usually AAA* points or more; the same for Dentistry. For Veterinary Science work experience is essential. Interview most important!
Modern Languages (degree) not including Oriental Language	French, German, Spanish (any two) and English, History, Geography, Business, Art.	One Modern Language may be enough for a language degree and a single language is often combined with other subjects at university. Business Studies with a language is one of the fastest growing courses at universities. But two languages at A-Level widens the choice.
Music	Music A-Level and /or practical music skills (grade 8 on more than one instrument).	Practical music through Academies; Musicology at universities. Many combined courses, e.g. Music with German available.
Natural Sciences	Maths and two of Chemistry, Physics and Biology.	Maths or Further Maths A-Level is expected for Oxbridge entry. Physics and Chemistry routes applicants must also study Maths A-Level. For the Biological route, Maths AS may suffice, but A-Level is recommended.
Pharmacy	Chemistry, another Science.	Pharmacists must have a degree in Pharmacy from an approved School of Pharmacy.
Physics, Applied Physics, Mathematical Physics	Physics and Maths plus one other (Economics, Business Studies, Chemistry, Biology, Further Maths).	
Politics and International Relations	Any combination of social science, humanities or science subjects. Politics at A-Level not a requirement.	Universities often offer joint honours courses including Politics (such as Politics & Law or Politics & Sociology) that sometimes have a slightly lower grade requirement.
Psychology	No particular subjects required though the inclusion of a science subject or Maths is advantageous.	Approved Psychology degree recognised by BPS necessary, if wanting a career in Psychology. Competitive entry. Work experience very useful.
Teaching	English, a science, Maths i.e. a National Curriculum subject if interested in primary school teaching).	For secondary teaching a degree the same as or at least containing the teaching subject is necessary, i.e. choose a degree at least some of the content of which is directly relevant to secondary education.
Theology and Religious Studies	(Philosophy & Ethics) Preferably an Arts course including English or History or both.	

Subject Overviews

Art and Design (A-Level)

Awarding Body: Edexcel

Introduction

Whether you are looking for a career directly linked to the creative industry or appreciate and enjoy the arts and recognise the role it plays in all workplaces, then the Art & Design A-Level is for you. Projects follow a similar structure as in Year 11, with a period of contextual study and media practice, concluding in students creating and managing their own personalised response. This structure enables you to develop and express your own creative journey, allowing you to personalise and connect with Art and Design.

Course Content

Year 12

Component 1: Your project is based on the theme of Human Boundaries.

Year 13

Component 1: Personal Investigation: Produce a comprehensive body of work based on a theme or artist of your own choice which is supported by a written study of 1000 words.

Component 2: Project based on an externally set theme where students have a set period to produce a body of work and this will conclude with creating a personalised final outcome within a 15-hour timed exam.

Entry Requirements

Minimum grade 4 in GCSE Art and Design, minimum grade 4 in GCSE English Language and a minimum grade 4 in GCSE Maths.

Career and Further Study

Art & Design A-Level is a highly respected subject amongst universities and colleges. You could progress to higher level study within Art & Design at University in the form of foundation or degree courses or could develop skills through on-the-job training as an apprentice. However, the A-Level compliments many other career aspects thanks to the skills you will develop and equip yourself with throughout the two years. Art & Design also supports one of England's largest growing career sectors, the creative arts industry.

Trips and Other Costs

You are expected to contribute to the cost of trips to galleries and the purchase of materials such as sketchbooks, portfolios and canvasses.

[Return to Contents](#)

Biology

(A-Level)

Awarding Body: AQA

Introduction

Biology enables us to make advances in our understanding of how living organisms function and the way they interact with each other and their surroundings. It also provides the means to design new methods for diagnosing and treating diseases. If you are interested in Biology and have enjoyed studying it at GCSE, then the A-Level course presents the perfect opportunity to extend your studies and deepen your understanding. It will develop your problem solving, numeracy, communication, experimental and analytical skills.

Course Content

- **Biological molecules** (carbohydrates, proteins, lipids, nucleic acids, ATP, water)
- **Cells** (structure of cells; viruses; methods of studying cells; the cell cycle and cell division, transport across membranes, cell recognition and the immune system)
- **Exchange** (surface area to volume ratio, gas exchange, digestion and absorption, mass transport)
- **Genetics** (DNA & protein synthesis, genetic diversity, taxonomy, biodiversity)
- **Energy transfers between organisms** (photosynthesis, respiration, ecosystems, nutrient cycles)
- **Responses to environment** (survival and response; receptors; control of heart rate; the nervous system; muscle structure and function, homeostasis)
- **Population genetics & evolution** (inheritance; populations; speciation; ecosystems)
- **Control of gene expression** (mutation; transcription & translation; cancer genetics; genome research)

Entry Requirements

Minimum grade 6 in GCSE Biology or minimum 6/6 in GCSE Combined Science, minimum grade 5 in GCSE Maths and a minimum grade 4 in GCSE English Language.

Career and Further Study

An A-Level in Biology is a highly versatile qualification and can enable you to progress to higher level study in any number of fields, most obviously Science or Medicine.

Trips and Other Costs

You are expected to purchase your own Biology textbook (ISBN: 0198351771). All A-Level Biology students will attend Woolley Firs Environmental Centre in Maidenhead to complete the fieldwork aspect of their course. You will be expected to cover the cost of the trip.

[Return to Contents](#)

Business

(A-Level)

Awarding Body: Edexcel

Introduction

The A-Level Business course offers students a dynamic insight into how businesses operate, grow, and succeed in today's world. Over the course, students will explore essential business concepts, including marketing, finance, human resources, and strategic decision-making. Through real-world case studies and practical applications, students will gain critical skills in analysis, problem-solving, and decision-making—valuable for further studies and career opportunities in business. This course is ideal for students with a keen interest in understanding how businesses drive economic and social impact globally.

Course Content

The Edexcel A-Level Business course is structured into four key themes.

- **Theme 1**, Marketing and People, focuses on how businesses understand their customers and manage their teams to achieve success.
- **Theme 2**, Managing Business Activities, examines how companies use resources and make financial decisions to support growth.
- **Theme 3**, Business Decisions and Strategy, students explore strategic decision-making, including growth strategies and risk management.
- **Theme 4**, Global Business, looks at the opportunities and challenges of operating on a global scale, such as international trade and the impact of globalisation. Through these themes, students gain a comprehensive view of business, from local to international contexts.

Entry Requirements

Minimum grade 5 in GCSE Business Studies, minimum grade 5 in GCSE English and a minimum grade 5 in GCSE Maths. Cannot be taken with Economics A-Level or Business BTEC.

Career and Further Study

Students will develop transferable skills that support study in a wide range of subjects at **university** and the transition to **employment**, including quantitative and analytical analysis.

[Return to Contents](#)

Business

(BTEC Level 3 National Extended Certificate)

Awarding Body: Pearson Edexcel

Introduction

The Extended Certificate is for learners who are interested in learning about the business sector alongside other fields of study, with a view to progressing to a wide range of higher education courses, not necessarily in business-related subjects. It is designed to be taken as part of a programme of study that includes other appropriate BTEC Nationals or A-Levels.

Course Content

- **Unit 1** - Exploring Business: Assessed piece of coursework exploring the purposes of different businesses, their structure and the role of the external environment.
- **Unit 2** - Developing a marketing campaign: Externally assessed piece of controlled assessment, where learners will gain skills relating to, and an understanding of, how a marketing campaign is developed.
- **Unit 3** – Personal and Business Finance exam: developing the skills and knowledge needed to understand, analyse and prepare financial information.
- **Unit 8** – Recruitment and Selection: Assessed piece of coursework where learners explore how the recruitment process is carried out in a business. The unit gives learners the opportunity to participate in selection interviews and review their performance.

Entry Requirements

Minimum grade 4 in GCSE English Language and a minimum grade 4 in GCSE Maths. Cannot be taken with Economics A-Level or Business BTEC.

Career and Further Study

Students will develop transferable skills that support study in a wide range of subjects at **university** and the transition to **employment**, including quantitative and analytical analysis.

[Return to Contents](#)

Chemistry

(A-Level)

Awarding Body: Chemistry A for OCR

Introduction

A-Level Chemistry is a challenging and rewarding subject that gives you a detailed insight into the key concepts that underpin our understanding of the chemical world. It will develop your problem solving, numeracy, communication, and analysis skills. Areas covered include synthesis of organic compounds used in pharmacology, development of an understanding of thermodynamics used in petrochemicals, and the electrochemistry fundamental to our development of more efficient cells and energy storage.

Course Content

- **Module 1:** Development of practical skills, this spans both years of the course and results in the potential awarding of a “practical endorsement”, it is also assessed throughout all modules.
- **Module 2:** Foundations in chemistry, this covers the fundamental concepts and calculations required for the remaining modules, it will be assumed knowledge within all further modules.
- **Module 3:** Periodic table and energy explores trends within the periodic table and how chemists investigate the energetics and kinetics of chemical reactions both experimentally and theoretically.
- **Module 4:** Core organic chemistry and analysis, in which you discover the key reactions of alkenes, alcohols, and haloalkanes, and learn the synthetic routes to convert between these compounds.
- **Module 5:** Physical chemistry and transition elements, having established the fundamentals within year 1 of the course, this module will explore acids, buffers, entropy, and electrochemistry in detail
- **Module 6:** Organic chemistry and analysis, this will introduce aromatic chemistry, spectroscopy, as well as the chemistry of biologically important molecules such as amino acids.

Entry Requirements

Minimum grade 6 in GCSE Chemistry or minimum 6/6 in GCSE Combined Science, minimum grade 5 in GCSE Maths and a minimum grade 5 in GCSE English.

Career and Further Study

A-Level Chemistry is a highly valued qualification that can enable progression into higher education in numerous fields. It can also facilitate immediate employment. Chemistry provides an essential foundation for a wide variety of careers including medicine, forensics, and environmental and material sciences.

Trips and Other Costs

You are expected to purchase the A Level Chemistry A for OCR textbook by Rob Ritchie and Dave Gent (ISBN: 9780198351979), Oxford University Press. Additional textbooks are also recommended such as Maths For A Level Chemistry – A Course Companion by Stephen Doyle (ISBN: 9781908682901) and A Level Chemistry for OCR A: Revision Guide by Emma Poole and Rob Ritchie (ISBN: 9780198351993).

[Return to Contents](#)

Computer Science

(A-Level)

Awarding Body: AQA

Introduction

If you enjoyed Computer Science at GCSE and feel you want to understand more or delve deeper into the evolving science of communication and the way in which technology functions; then A-Level Computer Science would be a great choice to support this exploration. The course is ideal for those who have studied Computer Science at GCSE and have discovered an interest that they want to explore to an A-Level standard.

The course will provide an insight to the functionality of modern computer systems, whilst also providing you with the skills to problem solve, program a solution of your choice and provide a solid foundation into how computer systems have evolved and continue to change the modern world.

Course Content

In Year 1, students will be introduced to a number of units that will allow students to further their understanding along with introductions to topics unseen before starting the course. Topics that will be covered in this year will include Problem Solving, Programming Concepts, Databases, Theory of Computation, Data Structures, Communication and Networking and Computer Systems. At the end of the first year, you will be introduced to the personal project, which will contribute 20% to your overall grade.

In Year 2, the units of study that will be covered as you progress will be Analysis of Existing Programs, Modification of Existing Programs, Big Data, Data Representation, Functional Programming, Consequences of using Computers, Computer Organisation and Architecture. You will also continue to refine your personal project. A hand-in date will be issued to students for moderation.

Entry Requirements

Minimum grade 6 in GCSE Computer Science, minimum grade 6 in GCSE Maths and a minimum grade 4 in GCSE English Language.

Career and Further Study

Learners will be able to progress onto a number of courses beyond A-Level, even those not related to Computer Science that could include Engineering, Computer Science, Software Engineering, Cyber Security, Apprenticeships and Sponsored Degrees.

Trips and Other Costs

You are expected to purchase your own textbooks.

[Return to Contents](#)

Criminology

(Level 3 Diploma)

Awarding Body: WJEC

Introduction

This WJEC course Level 3 Diploma course offers an exciting insight into the field of Criminology. It has been recognised by universities across the UK and carries necessary UCAS points should you wish to enter higher education. You will study crime, deviance and the criminal justice system. You will develop your understanding of the key concepts, theories and principles of criminology and their application across a range of case studies. You will learn about different methods of collecting evidence, the courtroom processes and the types of punishment available in the UK. 50% of the course will be assessed via controlled assessment coursework, so you need to be prepared to present a high standard of English to complete your written analysis of various case studies, with papers lasting 8 hours over two days.

Course Content

There are four areas to study across two years. In the first year, you will be studying:

- **Year 12 - Unit 1: Changing awareness of crime – (8 hours Controlled Assessment 25%)** different types of crime and statistics. We will then assess the role of media in representing crime; campaigns for change will then be compared and you will create your own campaign for change on a social issue related to crime.
- **Year 12 - Unit 2: Criminological theories – (exam 25%)** in this unit, you will learn about the reasons behind criminal behaviour; from biological to social factors, we will be assessing what makes people become criminals.
- **Year 13 - Unit 3: Crime Scene and Courtroom – (8 hours Controlled Assessment 25%)** this will be your chance to understand the investigators' point of view and learn how forensic evidence is collected; you will also be taught about the processes happening in the courtroom.
- **Year 13 - Unit 4: Crime and Punishment – (exam 25%)** – you will study punishments for crimes and the different ways of dealing with convicted criminals. You will evaluate the effectiveness of each method.

Entry Requirements

Minimum grade 4 in GCSE English Language, minimum grade 4 in GCSE Maths and a minimum grade 4 in GCSE Biology, or a minimum grade 4/4 in GCSE Combined Science. Students cannot choose Criminology and Psychology together.

Career and Further Study

The course will provide the underpinning knowledge, understanding and skills to allow you to progress to further study and training. It is relevant to many jobs within the criminal justice sector, including the police, probation service, prison and rehabilitation service, social workers and other legal professions.

Trips and Other Costs

Every student is expected to buy their own textbook – details will be given in your summer homework booklets prior to the course. We hope to visit London's County Hall to watch 'Witness for the Prosecution'.

[Return to Contents](#)

Digital Media

(Level 3 Cambridge Technical Extended Certificate)

Awarding Body: OCR

Introduction

The Level 3 Cambridge Technical in Digital Media provides students with a practical and academic introduction to the knowledge and understanding relevant to the industry. Students will develop their skills by focusing on the production of digital for media products. Students will develop media products to a client brief and create pre-production materials shoot footage and edit materials to create a professional media product.

Successful students of Digital Media should be collaborative, effective researchers and communicators, as well as high levels of creative.

Course Content

- **Unit 1** - Media products and audiences (examination)
- **Unit 2** - Pre-production and planning (examination)
- **Unit 3** – Create a media product (creative coursework)
- **Unit 20** - Advertising (creative coursework)
- **Unit 21** – Plan and deliver a pitch for a media product (coursework)
- **Unit 24** – Cross Media Industry Awareness (research based coursework)

Entry Requirements

Minimum grade 4 in GCSE English Language and a minimum grade 4 in GCSE Maths.

Career and Further Study

You could progress to study media at a higher level, or seek employment in a digital media field. Digital media provides an essential foundation for a wide variety of career areas including: Digital Layout Artists, Digital Graphic Designers, Freelance Reporter, Web-developers/designers, Animators, Runners, Assistant Camera Operators, Assistant Lighting Camera Person, Production Assistant, Promoters (festivals/live music events), Programme researcher, Media Internship.

Trips and Other Costs

You are not expected to purchase your own textbook as resources will be provided. There is a trip to Harry Potter studios Watford to look at their 'Script to Screen' seminar with a cost covered by students or parents.

[Return to Contents](#)

Drama

(A-Level)

Awarding Body: AQA

Introduction

Drama A-Level provides opportunities to deepen knowledge and understanding in practical skills in all elements of theatre; acting, directing and designing set, costume, lighting and sound. The course provides you with an excellent grounding in performance theory and theatre making. You will be provided with opportunities to develop your devising and scripted performance skills while analysing live theatre and exploring two set texts.

Course Content

- **Component 1:** The Written Exam. A study and exploration of Hedda Gabler by Henrik Ibsen, Our County's Good by Timberlake Wertenbaker and visits to see Live Productions to analyse and evaluate their success in meeting overall dramatic aims and intentions.
- **Component 2:** Creating Original Drama. Performance of an original, devised piece of theatre and supported with a working notebook.
- **Component 3:** Making theatre. Theatrical workshopping of two extracts from scripted performances influenced by contrasting practitioners and performance of a third extract. All recorded through a reflective report.

Entry Requirements

Minimum grade 5 in GCSE Drama, minimum grade 5 in GCSE English Literature and a minimum grade 4 in GCSE Maths.

Career and Further Study

Drama A-Level is a respected subject amongst Russell Group Universities. You could progress to higher level study at university or audition for Drama Schools. Transferable skills will also be developed throughout the two years. Drama provides a strong foundation for a wide variety of career areas including performing, designing, producing, media, teaching, law, journalism and more.

Trips and Other Costs

You are expected to cover the cost of live theatre trips and purchase your own scripts.

[Return to Contents](#)

Economics

(A-Level)

Awarding Body: Economics B for Edexcel

Introduction

The Pearson Edexcel Level 3 A-Level in Economics B is structured into four themes and consists of three externally examined papers. Students are introduced to economics through building knowledge of core microeconomic and macroeconomic concepts, and by investigating economic theory through real-world businesses and the environments in which they operate. Breadth and depth of knowledge and understanding with applications to more complex concepts and models are developed in the second year of study. Students will need to apply their knowledge and understanding to both familiar and unfamiliar contexts in the assessment and demonstrate an awareness of current economic events and policies.

Course Content

- **Theme 1:** Markets, Consumers and Firms, students learn the foundations of markets and demand, exploring consumer behaviour and business responses.
- **Theme 2:** The Wider Economic Environment looks at the external factors impacting businesses, such as competition, globalisation, and economic policy.
- **Theme 3:** The Global Economy, students investigate international trade, economic development, and the economic factors affecting global businesses.
- **Theme 4:** Making Markets Work teaches students about government intervention, market failure, and policies aimed at improving economic performance.

Entry Requirements

Minimum grade 6 in GCSE Maths and a minimum grade 5 GCSE English. Cannot be taken with Business A-Level or Business BTEC.

Career and Further Study

Students will develop transferable skills that support study in a wide range of subjects at university and the transition to employment, including quantitative and analytical analysis.

[Return to Contents](#)

English Literature

(A-Level)

Awarding Body: OCR

Introduction

A-Level English Literature will encourage you to develop your interest in, and enjoyment of, literary study through reading widely and critically. You will study a wide variety of fiction texts on a variety of themes and share ideas with your classmates on this wide variety of texts. The extensive reading you will undertake on this course includes poetry, prose and drama from different periods, including at least one play by Shakespeare, other texts written before 1900, and one text written after 2000.

For any English A-Level, a love of writing and a commitment to undertake extensive, independent, challenging reading is imperative.

Course Content

- Hamlet by Shakespeare
- A Doll's House by Ibsen
- Selected Poems by Christina Rossetti
- The Reluctant Fundamentalist by Mohsin Hamed and The Namesake by Jhumpa Lahiri ("The Immigrant Experience").
- Coursework-focusing on twentieth and twenty first century texts

Entry Requirements

Minimum grade 5 in GCSE English Language, minimum grade 5 in GCSE English Literature and a minimum grade 4 in GCSE Maths.

Career and Further Study

As the most 'traditional' of the English A-Level courses, English Literature is particularly prized by leading universities. It will prove an asset if you are applying to study any degree course in the humanities or social sciences, all of which place a premium on your powers of written expression. This course provides an excellent foundation for careers that demand a command of both spoken and written English, such as law, journalism, publishing, teaching and the media.

Trips and Other Costs

We aim to provide relevant trips, but this depends on what is available. You will need to purchase your own copy of Hamlet, A Doll's House, The Reluctant Fundamentalist and The Namesake.

[Return to Contents](#)

Extended Project Qualification

(Level 3 free standing qualification)

Awarding Body: AQA

Introduction

Are you a budding project manager? Have you got a burning desire to explore a brand new, original area of study? Do you enjoy researching and seeking out new learning on a topic entirely of your own choosing?

If the answer to these questions is yes, then the EPQ could be a great choice for you. The Extended Project develops and extends from one or more of your study areas and/or from an area of personal interest or activity outside your main programme of study. It will be based on a topic chosen by the you and agreed by your dedicated EPQ supervisor. In the past, students have completed research projects into self-driving cars, RED-S conditions in elite athletes, composition of classical architecture in ancient Rome or even explorations of femininity in 'My Little Pony'!

Course Content

Your EPQ will start in September and run over your entire Year 12 year. You will submit your EPQ in November of Year 13, so you have a little over a year to create, refine and deliver your project. You will be taught how to research effectively, project management skills, how to conduct risk assessments, ethical conditions of research, safe working practices as appropriate to the nature of your project, professional codes of practice, referencing, ICT skills and effective presentation skills.

For your final submission, you will need to create a production log detailing the process you have undertaken in your project, a presentation about your project, and suitable evidence of your project itself. This could be a written report of around 5000 words or an artefact plus a report of more than 1000 words.

Entry Requirements

Minimum grade 6 in both GCSE English Language and Maths, and an average points score of minimum 7 as the EPQ is completed in addition to your three other Level 3 courses.

Career and Further Study

Many universities see the EPQ as being a strong indicator of academic ability and will, in some cases, make contextual offers to students studying for the EPQ who apply to their courses. This is not to say that an EPQ guarantees access to university, but the independent, research and critical skills learned throughout the process are highly valuable. The EPQ contains key project management skills and, as such, is transferable to a range of subjects and career paths. It is a genuinely flexible qualification.

Trips and Other Costs

Students should be aware that there is no budget attached to the EPQ and so any production costs will need to be covered by the individual. These costs will be dependent on the nature of your project.

[Return to Contents](#)

Fashion and Textiles

(A-Level)

Awarding Body: AQA

Introduction

This creative and thought-provoking qualification gives students the practical skills, theoretical knowledge and confidence to succeed in a variety of careers. Especially those in the creative industries. They will investigate historical, social, cultural, environmental and economic influences on design and technology, whilst enjoying opportunities to put their learning in to practice by producing prototype of their choice. Students will gain a real understanding of what it means to be a designer, alongside the knowledge and skills sought by higher education and employers. Broadly speaking, those studying fashion will be taught to understand the construction of clothing. This means practicing drawing, pattern-cutting and tailoring, as well as developing an understanding of shape and colour. We will also help you build a knowledge of the industry, its history, cultural significance and ethical dilemmas.

Course Content

We will start by understanding where fabric comes from, then experimenting with different surface embellishment techniques and fabric manipulation. Students will learn how to read commercial patterns by making a garment. From those basic skill, we will then move onto modelling directly onto the stand and developing their pattern cutting techniques. Throughout the course theory knowledge will be covered and checked regularly to ensure students are confident in their written papers. The NEA (Non-Examination assessment) is introduced to students in the June and students can choose with direction they want to take their projects into.

Entry Requirements

Minimum grade 4 in GCSE Textiles or GCSE Technology or GCSE Art or GCSE Photography, minimum grade 4 in GCSE English Language and a minimum grade 4 in GCSE Maths.

Career and Further Study

It is important to remember that the fashion industry is vast: it contributes around £32 billion to the UK economy and supports some 797,000 jobs. This A-Level subject allows you to enrol in degrees in fashion design, textile/surface design, fashion business, marketing, costume or fashion journalism, accessory design and Art and Design. These can lead to careers in all aspects of Fashion and Textiles.

Trips and Other Costs

You are expected to attend trips to London and certain materials depending on their design work.

[Return to Contents](#)

French

(A-Level)

Awarding Body: AQA

Introduction

A-Level French continues to maintain its importance on a global scale. Gaining an A-Level qualification in French will enhance your employment opportunities. Communication and linguistic ability in French are also skills highly regarded by universities and employers.

The A-Level specification fosters a range of transferable skills including communication, critical thinking, research skills and creativity. The content is suitable for students who wish to progress to employment or to further study, including a modern languages degree (pure French or French with another subject).

Course Content

Year One

- Module 1: Changing nature of family, Cyber Society, Voluntary Work
- Module 2: Features of a diverse society, Life for the marginalised, Criminality
- Module 3: Cultural heritage, Contemporary Francophone music, Cinema

Year Two

- Module 4: Right to vote & Political commitment, Demonstrations & Strikes, Politics & Immigrations
- Film & Literature options: set texts from AQA (one of each)
- IRP (Independent Research Project): students select a topic which interests them, and which relates to a country or countries where the target languages is spoken.

Entry Requirements

Minimum grade 5 in GCSE French at Higher Tier, minimum grade 4 in GCSE English Language and a minimum grade 4 in GCSE Maths.

Career and Further Study

Studying a language to A-Level will enhance sought after communicative skills as well as an impressive awareness of other cultures, benefitting a variety of different careers.

Trips and Other Costs

Opportunity to take a role in planning KS5 French trip. You are expected to purchase your own textbooks.

[Return to Contents](#)

Further Maths

(AS and A-Level)

Awarding Body: Edexcel

Introduction

Further Mathematics is highly suitable for those students who have performed particularly well at Maths GCSE (ideally grade 8/9), enjoy the subject and are committed to learning new concepts. Students can opt to study Further Mathematics at AS level in Year 12. Universities look upon Further Mathematics favourably and consider it to be excellent preparation for many maths related courses and future careers.

Course Content

Year one / AS content

Half of this year of study comprises Core Pure Mathematics and the remaining half is given to two applied components, namely Further Statistics, Further Mechanics or Decision Maths. The topics are more demanding than the 'straight' mathematics topics, including new concepts such as matrices and complex numbers. For those wishing to study at AS level only, there are 2 equally weighted written exams to be sat in the May/June exam series of Year 12. A calculator may be used in both assessments. The first paper covers the Core Pure content. The second paper covers both applied modules studied.

Year two content

At A-Level the subject develops still further, and students continue to study Core Pure, and the same two applied components chosen in Year 1. The A-Level consists of 4 equally weighted written exams, all of which will be taken in the May/June exam series of Year 13 – Core Pure 1; Core Pure 2; and two of Further Statistics 1, Further Mechanics 1 or Decision 1. Calculators can be used in all assessments.

Entry Requirements

Minimum grade 7 in GCSE Maths and a minimum grade 4 in GCSE English Language. Must study A-Level Maths as well.

Career and Further Study

Students who study A-Level Further Mathematics may go on to study degree courses in Mathematics, Economics, Accounting, Physics, Business Studies, Computer Sciences and Mechanical Engineering, to name just a few. Potential career opportunities are extremely widespread - from Business and Finance through to Therapy Professionals!

Trips and Other Costs

Students are given access to free online textbooks, but should they wish to have their own hard copies, these would need to be purchased separately.

[Return to Contents](#)

Geography

(A-Level)

Awarding Body: Edexcel

Introduction

This issues-based A-Level Geography course explores contemporary global questions like population growth, globalisation impacts, and climate change responses. Students gain insights into both human and physical geography, critically analysing complex environmental issues and developing skills in communication, IT, teamwork, problem-solving, spatial awareness, and literacy.

Course Content

The curriculum is divided into Human Geography (human-environment interactions, population dynamics) and Physical Geography (earth systems, geology, landforms), with themes interwoven to encourage synoptic understanding. The course builds on KS4 foundations, supporting both new and continuing geography students.

- **Year 12 Physical:** Dynamic Landscapes - Topic 1: Tectonic Processes and Hazards. Topic 2B: Coastal Landscapes and Change
- **Year 12 Human:** Dynamic Places - Topic 3: Globalisation. Topic 4A: Regenerating Places
- **Year 13 Physical:** Systems and Sustainability - Topic 5: Water Cycle and Water Insecurity. Topic 6: Carbon Cycle and Energy Security
- **Year 13 Human:** Systems and Geopolitics - Topic 7: Superpowers. Topic 8B: Health, Human Rights, and Intervention

The A-Level is assessed via three exams in Year 13 and an independent investigation:

- **Paper 1: (Human Geography):** Topics 1, 2, 5, and 6 (30%)
- **Paper 2: (Physical Geography):** Topics 3, 4, 7, and 8 (30%)
- **Paper 3: (Synoptic):** Interconnections across all topics (20%)
- **Independent Investigation:** Fieldwork-based project (20%)

Entry Requirements

Minimum grade 5 in GCSE Geography, minimum grade 5 in GCSE English Literature and a minimum grade 4 in GCSE Maths.

Career and Further Study

Geography is a facilitating subject valued by universities and employers for its diverse skill set, including analytical, numerical, and technological skills. Career paths include town planning, sustainability, conservation, as well as fields like law, journalism, and accounting. Geography is considered one of the most employable subjects currently on offer for post 16 education (Guardian, 2024).

Trips and Other Costs

The compulsory residential field course costs approximately £425, along with required textbooks:

- **Year 12 Textbook:** [Link](#)
- **Year 13 Textbook:** [Link](#)

For more information, visit the [Edexcel A-Level Geography Specification Page](#).

[Return to Contents](#)

German

(A-Level)

Awarding Body: AQA

Introduction

German is the most widely spoken first language in the European Union and increasingly important in the world of Politics and Business. Gaining an A-Level qualification in German will enhance your employment opportunities. Communication and linguistic ability in German are also skills highly regarded by universities and employers.

The A-Level specification fosters a range of transferable skills including communication, critical thinking, research skills and creativity. The content is suitable for students who wish to progress to employment or to further study, including a modern languages degree (pure German or German with another subject).

Course Content

Year one

- Module 1: Changing state of family, The Digital World, Youth Culture
- Module 2: Immigration, Integration, Racism
- Module 3: Festivals & Traditions, Art & Architecture, Cultural life in Berlin

Year two

- Module 4: Germany & The European Union, Politics & Youth, Consequences of German reunification
- Film & Literature options: set texts from AQA (one of each)
- IRP (Independent Research Project): students select a topic which interests them, and which relates to a country or countries where the target languages is spoken.

Entry Requirements

Minimum grade 5 in GCSE German at Higher Tier, minimum grade 4 in GCSE English Language and a minimum grade 4 in GCSE Maths.

Career and Further Study

Studying a language to A-Level will enhance sought after communicative skills as well as an impressive awareness of other cultures, benefitting a variety of different careers.

Trips and Other Costs

Opportunity to take a role in planning KS5 German trip. You are expected to purchase your own textbooks.

[Return to Contents](#)

History

(A-Level)

Awarding Body: Edexcel

Introduction

The History course at A-Level provides students with the opportunity to understand how the past has shaped our present. It allows students to develop critical thinking skills and focuses on the themes of revolution, social change and civil rights.

Course Content

- **Britain: Conflict, Revolution and Settlement (1625-1701)** - In Year 12, you will study the Stuart monarchy and their inability to secure political stability. You will also evaluate the strength of the Anglican Church, developments in social hierarchy and social thought and the changing nature of the British Economy. The unit will conclude by evaluating historical interpretations of the Glorious Revolution.
- **Russia in Revolution (1894-1924)** – In Year 12, you will study the demise of the Tsars, examining: the nature of Tsarism and the opposition towards this; the end of Romanov rule; the nature of the Provisional Government and its opponents; and the Bolshevik Revolution.
- **Civil Rights and Race Relations in the USA (1850-2009)** – In Year 13, you will study the development of race relations in the USA from the emancipation of black Americans in 1865 through to the presidential campaign of Barack Obama. Students will also engage with the representation of race in literature, TV and film and the changing geography of race relations.
- **Coursework** – In Year 13, students will complete an independent piece of coursework which is 4000 words long. Students are expected to compare and evaluate historical views on a chosen enquiry.

Entry Requirements

Minimum grade 5 in GCSE History, minimum grade 5 in GCSE English Literature and a minimum grade 4 in GCSE Maths.

Career and Further Study

History A-Level is highly valued by employers and academic institutions. It helps students to develop excellent communication, analysis and research skills. As well as further studies in History, students with this qualification go on to study degrees in Law, Journalism, Business and Politics.

Trips and Other Costs

You are expected to purchase your own textbooks.

[Return to Contents](#)

Medical Science AAQ

(BTEC Level 3 National Extended Certificate)

Awarding Body: Pearson

Introduction

This course provides a broad basis of study for students looking to develop their applied knowledge and skills in medical sciences with a view to working in the health care sector. It is equivalent to one A-level in size.

Course Content

- **Unit 1: Principles of Human Physiology, Anatomy and Pathology**

The unit will be assessed through a 90-minute external examination in May.

- **Unit 3: Practical Microbiology and Infectious Diseases (coursework component)**

Students will investigate the effect of antimicrobial agents on the growth of microorganisms.

- **Unit 2: Health Issues and Scientific Reporting**

The unit will be assessed through a two-hour external examination in January.

- **Unit 4: Diseases, Disorders, Treatments and Therapies (coursework component)**

External assessment accounts for 58% of the overall award with the remaining 42% coming from coursework components that are internally assessed (but externally verified).

Entry Requirements

Minimum grade 4 in GCSE Biology or minimum 4/4 in GCSE Combined Science, minimum grade 4 in GCSE English Language and a minimum grade 4 in GCSE Maths.

Career and Further Study

An A-Level in Medical Science is a highly versatile qualification and can enable you to progress to higher level study in any number of fields such as occupational health, physiotherapy, nursing, midwifery, sport science, forensics and pathology. Learners should always check the entry requirements for degree programmes with the specific higher education provider.

Trips and Other Costs

Handbooks are available for each unit of the course. These handbooks will be printed by the school, and you will be required to contribute towards the cost of printing (approximately £2.50 per handbook).

[Return to Contents](#)

Mathematics

(AS/A-Level)

Awarding Body: Edexcel

Introduction

A-Level Mathematics is a course which is highly suitable for those students who have performed well at GCSE level, enjoy the subject and are committed to learning new concepts. Throughout the course students develop their ability to reason mathematically, solve problems and model real life situations.

Course Content

Year one

Many aspects of mathematics are taught, with an initial focus being on developing algebraic skills. For those wishing to study at AS level only, there are 2 written exams to be sat in the May/June exam series of Year 12. A calculator may be used in both assessments. The content for each module is as follows:

- **Pure Maths 1:** Algebra and functions, Coordinate geometry in the (x, y) plane, Trigonometry, Exponentials and logarithms, Differentiation, Integration, Vectors
- **Statistics:** Statistical sampling, Data presentation and interpretation, Probability, Statistical distributions, Statistical hypothesis testing
- **Mechanics:** Quantities and units in mechanics, Kinematics, Forces and Newton's laws.

Year two content

At A-Level the subject develops still further, and students continue to study 2/3 Pure, 1/6 Statistics and 1/6 Mechanics. The A-Level consists of 3 equally weighted written exams, all of which will be taken in the May/June exam series of Year 13.

- **Pure Maths 2:** Proof, Algebra and functions, Sequences and series, Trigonometry, Differentiation, Numerical methods, Integration, Vectors
- **Statistics:** Statistical sampling, Data presentation and interpretation, Probability, Statistical distributions, Statistical hypothesis testing
- **Mechanics:** Quantities and units in mechanics, Kinematics, Forces and Newton's laws.

Entry Requirements

Minimum grade 6 in GCSE Maths and a minimum grade 4 in GCSE English Language.

Career and Further Study

A-Level Mathematicians may go on to study degree courses in Mathematics, Economics, Accounting, Physics, Business Studies, Computer Sciences and Mechanical Engineering, to name just a few. Potential career opportunities are extremely widespread - from Business and Finance through to Therapy Professionals!

Trips and Other Costs

Free online textbooks are provided through the school, but should students wish to have their own hard copies, these would need to be purchased separately. Students will need a suitable scientific/graphics calculator, which range from approximately £30-70 depending on the model.

[Return to Contents](#)

Music

(A-Level)

Awarding Body: Eduqas

Introduction

Studying Music at A-Level will introduce you to a wealth of new approaches to music, whilst challenging you to deepen your current interests and skills. It is exciting and rewarding, unique in its combination of academic study and creative opportunity. The course focuses on developing three key skills: performing, composing and appraising.

Course Content

- Western Classical Music
- Development of the symphony 1750-1900
- Musical Theatre
- How to read orchestral scores and transposing instruments
- Developing performance techniques and requirements
- Composing in a variety of styles
- Musical language and composers of 21st century ('Boardwalk' and 'Natural Bridges' by Sally Beamish),
- A study of Debussy's Nuages and Poulenc's Trio

Entry Requirements

Minimum grade 5 in GCSE Music, minimum grade 4 in GCSE English Language, minimum grade 4 in GCSE Maths. Grade 5 on an instrument at the beginning of the course and have Grade 5 theory (certificates will be required on Results Day for enrolment).

Career and Further Study

Music is a highly regarded academic subject with an excellent reputation with both employers and universities. This course provides a sound preparation for the study of music in higher education, as well as providing opportunities to develop strengths and interests leading to music-related and other careers. Music A-Level develops versatile strengths, ideal for any industry.

Popular degrees for students who take Music A-Level range from Music to Drama, English, Mathematics, Teacher training, Psychology, Economics and many more. Music A-Level, and Music degrees, can lead to a vast range of careers from teachers to performance artists, managers, lawyers, accountants, therapists and media professionals, to name but a few.

Trips and Other Costs

You will be expected to buy some musical scores and a Music textbook. There will be music trips over the 2 years.

[Return to Contents](#)

Physics

(A-Level)

Awarding Body: AQA

Introduction

Physics is the study of nature; it aims to understand particles, energy, forces and fields on both the smallest and largest scales, from the interaction of the smallest particles to the way the Universe has evolved since the beginning of time. Alongside these fundamental aspects, we will also cover topics more relevant to our daily lives and see how Physics underpins much of the technology we have come to rely on in the modern world and has inspired the digital revolution.

Course Content

- **Paper 1** – In Year 12, we study the fundamental particles and forces that our Universe is made of, and how those particles interact. We will go on to look at wave behaviour, materials and mechanics, and deepening our understanding of electricity from GCSE level.
- **Paper 2** – In Year 13, we look at mechanics in more detail. We will study thermodynamics and gas laws, as well as the molecular kinetic theory model. We will also cover electric, gravitational fields and magnetic fields, before studying radioactivity along how it is used in the modern world, along with nuclear energy.
- **Paper 3** – Throughout the course, there will be a minimum of 12 assessed practical investigations, designed to demonstrate and hone your practical skills. These will be examined in Paper 3, along with an optional topic with the choice from: Medical Physics, Engineering, Astrophysics, Turning points, Electronics

Entry Requirements

Minimum grade 6 in Physics or 6/6 in GCSE Combined Science, minimum grade 6 in GCSE Maths and a minimum grade 4 in GCSE English Language . A combination with Maths A-Level is strongly recommended.

Career and Further Study

A Physics A-level is one of the most respected courses for any University application, particularly for Oxbridge and Russell group universities. Physics, along with Mathematics, has the highest number of degrees that deem is “essential” to study. This course is an excellent foundation for further study of Physics, astrophysics, a whole range of engineering degrees, medical physics and medicine. It is estimated that over half of all new jobs will be related to STEM (Science, Technology, Engineering & Maths) subjects, you will make yourself employable all over the world.

Trips and Other Costs

The textbook for the 2-year course can be bought for £37 or accessed for free online via Kerboodle. Free trip(s) to see JET fusion reactor or Diamond Light Source in Oxfordshire, spaces permitting. Optional 3-day trip to Geneva to see the CERN facility in Spring 2027, which costs in the region of £500.

[Return to Contents](#)

Physical Education

(A-Level)

Awarding Body: AQA

Introduction

A-level Physical Education is an ideal course of study for a competitive individual. It builds on the foundation of knowledge laid through the GCSE course and merits physical sporting excellence. It develops theoretical knowledge of the factors that underpin physical activity and sport. The course encompasses the study of the athlete and their performance through physiological, psychological, technological and socio-cultural factors.

Course Content

- **Component 1:** Written exam: Factors affecting participation in physical activity and sport.
- **Component 2:** Written exam: Factors effecting optimal performance.
- **Component 3:** Practical performance in physical activity and sport. Section 1 - Performance assessment to be assessed in one activity in the role of player/performer or coach. Section 2 - Performance Analysis Assessment - written analysis and evaluation of performance.

The physical activity performed must be from the Department for Education accredited sports list which can be on the document in the link below (page 37-41).

Accredited Sports List

Entry Requirements

Minimum grade 5 in GCSE PE minimum grade 4 in GCSE English Language and a minimum grade 4 in GCSE Maths. If PE not taken at GCSE minimum grade 5 in GCSE Biology, or minimum grade 5/5 in GCSE Combined Science, minimum grade 4 in GCSE English Language and a minimum grade 4 in GCSE Maths. Written declaration from NGB affiliated coach or club confirming participation including level of participation and approval to obtain video footage for NEA.

Career and Further Study

You could progress to higher level study such as a Sports Science, Sports Studies or Sports Psychology. You could seek employment in sports, leisure or tourism. Physical Education provides an essential foundation for a wide variety of career areas including physiotherapy, teaching, coaching, osteopathy, sports technology, sports psychologist, dietician and many more.

Trips and Other Costs

You are required to purchase your own textbooks.

Return to Contents

Politics

(A-Level)

Awarding Body: AQA

Introduction

There has never been a better or more important time to study Politics. This highly topical and relevant subject will attract those with enquiring minds who want to understand the organisations and processes which produce democratic government in the UK and USA. The strengths and weaknesses of both systems will be analysed through detailed study and analysis of relevant case studies from each country. In addition, you will analyse and evaluate the beliefs and values of liberalism, conservatism, socialism and feminism.

Course Content

- **Paper One** – In Year 12, you will study the component parts of the British Government (i.e. UK Constitution, Parliament and Executive) and key elements of British Politics such as debates on democracy and participation and the electoral process.
- **Paper Two** – In Year 13, you will study the component parts of the US Government and elements of US Politics. As part of this, you will compare this to the UK and analyse similarities and differences between the two countries.
- **Paper Three** – In Year 12 and Year 13, you will examine liberalism, socialism, conservatism and feminism and explore the beliefs and theories of key thinkers within each tradition.

Each paper contains a mixture of short, medium and longer essay questions and is equally weighted. All three papers are sat in the Summer of Year 13.

Entry Requirements

Minimum grade 5 in GCSE English Literature and a minimum grade 4 in GCSE Maths.

Career and Further Study

Politics students go on to study a wide range of humanities, social science or business-related subjects at university, or enter into a wide range of careers in politics, finance, management, or the civil service. Many politicians including studied Politics at university.

Trips and Other Costs

- Annual trip to Parliament (Year 12)
- Annual Politics Conference hearing from MPs (Years 12 and 13)

You are expected to purchase your own textbooks.

[Return to Contents](#)

Product Design

(A-Level)

Awarding Body: AQA

Introduction

Product Design gives you the chance to get creative and innovative to develop products to enhance life. You will develop design skills and learn about the complex relationships between design, materials, manufacturing and marketing. Product Design covers all areas of the design process, and you will explore innovative materials and equipment to bring your designs to life. Through projects, students will have the option to explore Graphics, Furniture and Architecture alongside more traditional products. Students will be able to consider existing ideas, test them where appropriate and consider developments needed to modify them for a more challenging market. From these designs and ideas, students will develop prototypes of their products, test and make alterations to their ideas. Then modifications students will make will influence them to produce a working outcome and consider the requirements for commercial manufacture.

Course Content

We cover a multitude of theory through practical mini projects – for example: Chair project, using 2D design and the laser cutter. Look at the casting processes, designing a toy project by using a 3D printer. They will look to improve their woodwork and resistant materials processes in a box project etc. Throughout the course theory knowledge will be covered and checked regularly to ensure students are confident in their written papers. The NEA (Non-Examination assessment) is introduced to students in the June and students can choose with direction they want to take their projects into.

Entry Requirements

Minimum grade 5 in GCSE Textiles or GCSE Technology or GCSE Art or GCSE Photography, minimum grade 4 in GCSE English Language and a minimum grade 4 in GCSE Maths.

Career and Further Study

Following a Product Design course there are a wide variety of careers that students could follow such as degrees in Aeronautical Engineering, Architecture, Art and Design, Electrical/Electronic Engineering, Education, Engineering, Fashion, Materials Science and Mechanical Engineering. These can lead to careers in all aspects of design from Interiors, Product designers, CAD Technicians, Architects to Project managers.

Trips and Other Costs

You are expected to purchase your own textbooks and certain materials depending on their design work.

[Return to Contents](#)

Psychology

(A-Level)

Awarding Body: AQA

Introduction

This course offers an engaging and effective introduction to Psychology, the study of human mind and behaviour. During the course you will develop skills highly valued by higher education and employers, including critical analysis, independent thinking and research. You will learn how to design your own study and how to analyse the results using inferential statistics.

Course Content

The course is broken up into 11 sections across 2 years. There are 3 papers of 2 hours in length at the end of year 2.

- Approaches: from setting up the first psychological lab, through Pavlov's conditioning, to Freud and the assumptions of the humanistic approach.
- Biopsychology: brain structures, neuronal pathways, brain scans and more.
- Social Influence: why we obey authority and why people conform.
- Memory: how our memory works and how we can improve it.
- Attachment: the bonds formed with our primary caregivers and the impact on society when this goes wrong.
- Psychopathology: normality and how to diagnose and treat mental problems, such as OCD, depression and phobias.
- Research methods: from case studies to lab experiments; the procedures, ethics and evaluation of methodology.
- Year 2 topics: Issues and Debates, Relationships, Schizophrenia and Forensic Psychology.

Entry Requirements

Minimum grade 5 in GCSE English Language, minimum grade 5 in GCSE Maths and a minimum grade 6 in GCSE Biology or a minimum grade 6/6 in GCSE Combined Science. Students cannot choose Criminology and Psychology together.

Career and Further Study

Psychology is widely recognised and valued becoming increasingly important in a range of disciplines from sports and exercise psychology to human resources management, leadership, advertising, marketing, criminology, health care professions, social services and teaching. It is supportive of university courses or to enter employment or apprenticeships.

Trips and Other Costs

Every student will have access to the online textbooks. Our students are welcome to buy a paper version. Illuminate: AQA Psychology for A-Level Year 1 and Year 2. There will be a trip to a highly regarded speaker programme in London.

[Return to Contents](#)

Religious Studies

(A-Level)

Awarding Body: OCR

Introduction

Religious Studies will extend your studies and further your knowledge of this exciting subject. You will think deeply about important questions, exploring philosophy, ethics and the development of Christian thought using analytical, critical and logical thinking skills. Religious Studies combines well with many subject options and requires that you have a real interest in philosophical and ethical questions as well as religion in our world today.

Course Content

Year 12

- **Philosophy of Religion:** Study of Ancient Greek philosophers leading to an exploration of the mind, body and soul. Debate around the problem of evil, arguments for the existence of God, as well as the impact and reality of religious experiences.
- **Developments in Christian thought:** Fundamental beliefs of Christians and their belief in God's existence. Debate around death and the afterlife, as well as our human nature. Exploration of Christian moral principles and study the life and work of Dietrich Bonhoeffer.
- **Religion and Ethics:** Four ethical theories; Natural Law, Situation ethics, Kantian ethics, and Utilitarianism. Applying these to moral decisions found in the ethics of euthanasia and business ethics.

Year 13

- **Philosophy of Religion:** You will study theological and philosophical developments throughout history, leading to an exploration of religious language.
- **Developments in Christian thought:** You will explore the rise of secularism and pluralist societies and the impact on faith. We will study liberation theology, as well as gender and society and theology.
- **Religious and Ethics:** You will apply the four ethical theories from Year one to sexual ethics. You will explore ethical language in depth, and the psychological and theological explanation for a conscience.

The A-Level will consist of 3 written exams, all of which will be taken in June of the second year of teaching. Each exam is 2 hours long and will consist of three 40-mark questions.

Entry Requirements

Minimum grade 5 in GCSE Religious Studies, minimum grade 5 in GCSE English and a minimum grade 4 in GCSE Maths. If Religious Studies not taken at GCSE then minimum grade 5 in GCSE English and a minimum grade 4 in GCSE Maths.

Career and Further Study

Religious Studies provides an essential foundation for a wide variety of career areas including education, law, medicine, social work, police force, journalism, the armed services, politics, health and social science, charity work, business etc.

Trips and Other Costs

You are expected to purchase your own textbooks and revision guides.

[Return to Contents](#)

Spanish

(A-Level)

Awarding Body: AQA

Introduction

Spanish is a widely spoken language around world and boasts a vibrant culture. Gaining an A-Level qualification in Spanish will enhance your employment opportunities. Communication and linguistic ability in Spanish are also skills highly regarded by universities and employers.

The A-Level specification fosters a range of transferable skills including communication, critical thinking, research skills and creativity. The content is suitable for students who wish to progress to employment or to further study, including a modern languages degree (pure Spanish or Spanish with another subject).

Course Content

Year one

Module 1: Modern and traditional values, Cyberspace, Equal rights

Module 2: Immigration, Racism, Integration

Module 3: Modern day idols, Spanish regional identity, Cultural heritage

Year two

Module 4: Today's youth and tomorrow's citizens, Monarchies and Dictatorships, Popular movements

Film & Literature options: set texts from AQA (one of each)

IRP (Independent Research Project): students select a topic which interests them, and which relates to a country or countries where the target languages is spoken.

Entry Requirements

Minimum grade 5 in GCSE Spanish at Higher Tier, minimum grade 4 in GCSE English Language and a minimum grade 4 in GCSE Maths.

Career and Further Study

Studying a language to A-Level will enhance sought after communicative skills as well as an impressive awareness of other cultures, benefitting a variety of different careers.

Trips and Other Costs

Opportunity to take a role in planning KS5 Spanish trip. You are expected to purchase your own textbooks.

[Return to Contents](#)

Sport

(BTEC - Level 3 Extended Certificate)

Awarding Body: Pearson Edexcel

Introduction

This course offers students a broad basis of study in the sports sector. Students will have to complete a range of units which cover a range of assessment styles - assignments including written and practical activities, examinations and tasks. The course covers topics that include anatomy and physiology, fitness, health and training, sports psychology and the sports industry. Students need to be organised, independent and motivated with a keen interest in sport and its associated industries.

Course Content

Year 12

- **Unit 2:** Written exam: Fitness Training and Programming for Health, Sport and Well-Being. Learners explore client screening and lifestyle assessment, fitness training methods and fitness programming to support improvements in a client's health and well-being.
- **Unit 3:** Written coursework: Professional Development in the Sports Industry. Learners explore the knowledge and skills required for different career pathways in the sports industry.

Year 13

- **Unit 1:** Written exam: Anatomy and Physiology. Learners explore how the skeletal, muscular, cardiovascular and respiratory systems function and the fundamentals of the energy systems.
- **Unit 6:** Written coursework: Sports Psychology. Students explore theories based around group and performance psychology before developing a psychological training programme for a client.

Entry Requirements

Minimum grade 4 in GCSE PE or GCSE Health and Fitness, minimum grade 4 in GCSE English Language and a minimum grade 4 in GCSE Maths. If PE or GCSE Health and Fitness not taken at GCSE Minimum grade 4 in GCSE Biology or 4/4 in GCSE Combined Science, minimum grade 4 in GCSE English Language and a minimum grade 4 in GCSE Maths.

Career and Further Study

This course has been developed in collaboration with universities and industry, it prepares students for a life in higher education or as a basis for entry into the workplace or apprenticeships. This course provides students with links to careers including Sports Coaching, Sports Therapy, Sports Science, Sports Development, Sports Psychology, The Leisure Industry, Leisure Management, PE Teaching and Personal training.

Trips and Other Costs

You are expected purchase your own textbooks and revision guides.

[Return to Contents](#)

**FURZE
PLATT**
SENIOR SCHOOL

SIXTH FORM



The Sixth Form Team



Mr Peter Ging

Head of Sixth Form

peter.ging@furzeplatt.net



Mrs Kate Kalinowski

Assistant Head of Sixth Form, Head of Progress for Year 13

kate.kalinowski@furzeplatt.net



Mr Andrew Colmer

Assistant Head of Sixth Form, Head of Progress for Year 12

andrew.colmer@furzeplatt.net



Mrs Mary Pasa

Sixth Form Manager

mary.pasa@furzeplatt.net



Mrs Claire Beale

Sixth Form Study Supervisor Manager and Coach

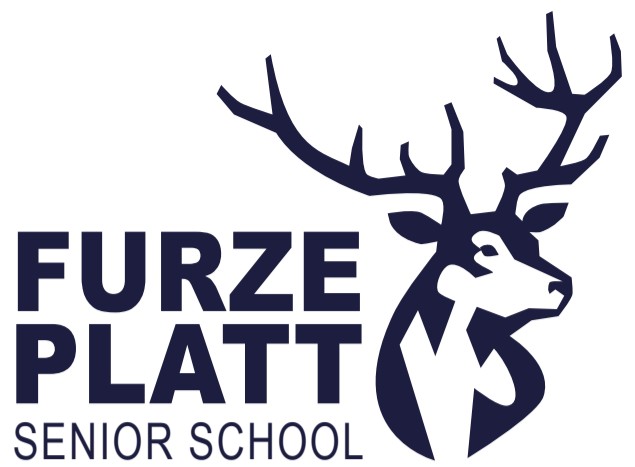
claire.beale@furzeplatt.net



Mrs Jo Jennings

Sixth Form Learning Mentor

jo.jennings@furzeplatt.net



Contacts & Further Information

Full course information is available at:

www.furzeplatt.com

For further assistance please contact:

Sixth Form Administrator

Email: sixthform.admin@furzeplatt.net

Telephone: **01628 625308 ext.604**

Furze Platt Sixth Form

Furze Platt Senior School

Furze Platt Road

Maidenhead

Berkshire

SL6 7NQ



[Return to Contents](#)